

# ELECTRONIC INTELLIGENCE

Surveillance & OSINT



# About **Bramston & Associates**

Bramston & Associates delivers specialised professional services and solutions in security and risk management field since 2002. Our know-how relies on solutions based on facts, experience and expertise provided by seasoned consultants' teams and partners leading in their speciality. Our customers face risk every day. From the hazardous processes used in their businesses to the extreme locations in which they operate, risk is an inherent part of their business. While we cannot eliminate these risks, we can establish risk management systems to protect and add value to the organisation. We provide services and solutions through four main lines of services:

**Risk Management Services (RMS):** RMS is our main service and support unit. It coordinates our Customers' overall risk management effort through specific programs of security, technology, protective services and crisis management.

**Environmental Risks:** This line enables us to evaluate and analyse hazards and environmental risks, mitigating risks with adequate solutions.

**Technology Risk:** Technology risks threaten assets and processes vital to business and may prevent compliance with regulations, impact profitability, and damage organisation's reputation in the marketplace. We are here to help you on this.

**Enterprise Risk Management:** Taking a proactive stance leads to more effective strategies to minimise the downside while maximising the upside of risk of your organisation.

**Crisis Management:** We offer a full range of services to better prepare your organisation before disaster strikes. We prepare and respond to the crisis with your team, communicate the right way to the right channel, and help you recover more quickly.

## WE MAKE IT HAPPEN

We provide a disciplined means to identify, quantify and manage a range of risks, including operational, man-made and natural. We establish a framework that supports informed decision-making, planning and allocation of resources to protect and enhance the organisation's assets, image and objectives through improved operational efficiency.



## EFFECTIVE AND PROVEN SOLUTIONS FOR:

- ➔ law enforcement agencies
- ➔ fire & rescue services
- ➔ natural hazards and environmental disasters
- ➔ infrastructure & public utilities security (geo-application technologies)
- ➔ crime prevention & deterrence
- ➔ communication confidentiality
- ➔ large organisations mass notifications
- ➔ banking technology security issues
- ➔ overseas travels
- ➔ organisations crisis management preparedness, response and recovery.

# Content

Complete, end-to-end COTS OSINT solution for government and corporate enterprise.

**02**

Bramston & Associates brief

**05-10**

HIWIRE™ Web Intelligence System

**11-15**

Electronic Surveillance

**17-21**

Lawful Interception

**23-27**

Unconventional IP Intelligence

**28**

How to contact us

This document is the intellectual property of Bramston & Associates. It is protected by copyright and it is presented in circumstances of complete confidentiality. It must not be given, reproduced, or disseminated, to any person, public authority, institution or organisation without the express consent of Bramston & Associates in writing. In no event shall Bramston & Associates be liable to anyone for special, incidental, collateral, or consequential damages arising out of the use of this information.

Many designations used by manufacturers and sellers to distinguish their products are claimed as trademarks or other proprietary rights. Where designations appear, and when the editorial staff were aware of a claim, the designations have been shown. Other trademarks, registered trademarks, and service marks are the property of their respective owners.

Copyright © 2015 Bramston & Associates. All rights reserved.  
Originated in Mauritius, Phoenix Office.



- ➔ Tracking anonymously behaviours
- ➔ Influencing and trending web
- ➔ Testing reactions
- ➔ Managing multiple avatars

HIWIRE™

# WEB INTELLIGENCE SYSTEM

Complete, end-to-end COTS OSINT solution





## HIWIRE™ System Concept

A powerful suite of tools for graphical, organic, real-time analysis of deep social media and big data.

We HIWIRE™ was designed as more than a powerful, end-to-end toolset for the OSINT analyst. The complete system also addresses the different process requirements and concerns of crucial supporting functions within the purchasing organization.

### For OSINT Analysts/Operators

Log into a single Intelligence Desk™ to access a comprehensive array of tools needed throughout the web intelligence production lifecycle, from social media mapping and analysis, to cultivation and operation of virtual avatars, all the way through data collection,



## DESIGNED BY OSINT PROFESSIONALS FOR OSINT PROFESSIONALS

processing and report generation.

### **For OSINT Teams/Managers**

HIWIRE™ allows operation team leaders and managers to view operator output in real-time, facilitate collaboration, and measure efficiency. Drill down to find out where and how your team is most effective, and guide them towards the right sources, tools and tactics within the system and on the web.

### **For Technical IT Personnel**

HIWIRE™ is a fully-featured product, not an integration project. We supply hardware, software, technical training and support. The system is fully configurable on the fly, and will hook up

painlessly to external data sources. It supports a secure air gap workflow, and granular compartmentalization right out of the box.

### **For Purchasing Organizations**

HIWIRE™ is the only system of its kind provided COTS, and deployed in conjunction with exhaustive technical and methodological OSINT training. Your organization is already producing valuable intelligence on HIWIRE™ less than a month from purchase order

# System Capabilities

HIWIRE™ is designed by OSINT professionals for OSINT professionals. All system capabilities originate from a real live intelligence production floor. Every feature is proved day in day out dozens working web intelligence analysts.

**Robust, scalable Virtual HUMINT™ operations platform for cloaked target engagement and proactive influence**

- ➔ Switch identities instantly, on the fly
- ➔ Single operator, multiple avatars
- ➔ Full activity log, complete audit trail
- ➔ Easy avatar configuration & maintenance



**Graphical, organic, real time tools designed ground-up for intelligence work around social media and big data.**

- ➔ Organic Data Mapping & Source Mapping
- ➔ Real Time Target Object Surveillance
- ➔ Automated Graphical Link Analysis
- ➔ Domain Adaptability through Dynamic Scoring



A concrete, flexible **knowledge-management** backbone based on our referential Intel-Item™ data-object rubric.

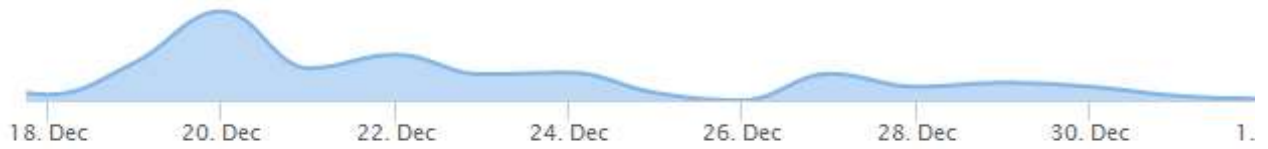


A multitude of efficiency enhancing **collaboration & workflow**, compartmentalization and internal auditing tools.





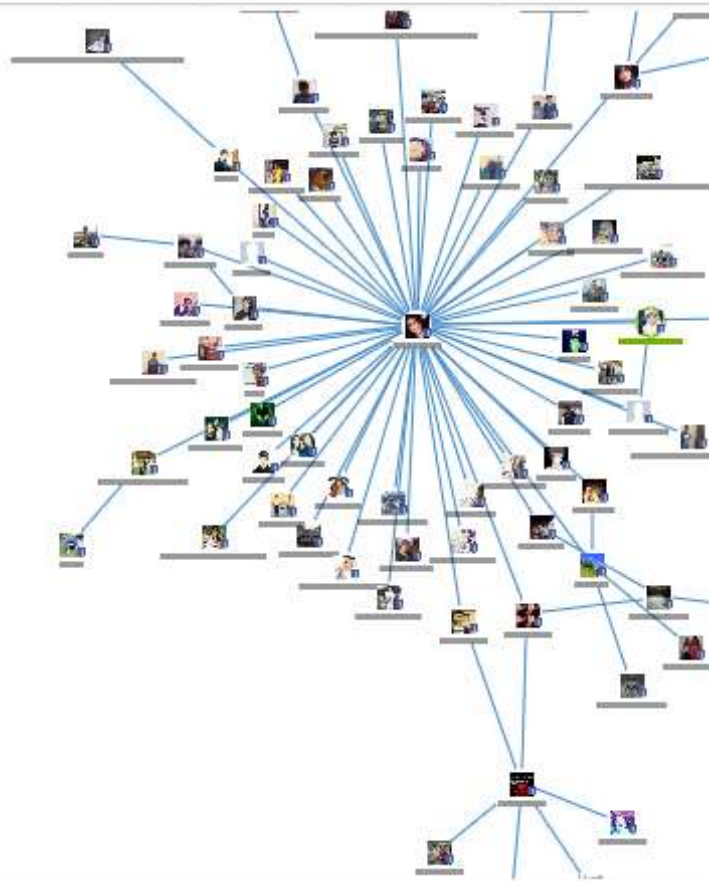
# Activity



POSTS MEMBERS **LINK ANALYSIS** NOTES

Layout Nodes Chart

A vertical sidebar of navigation controls. From top to bottom: a circular directional pad with four blue arrows; a hand icon; a plus sign in a circle; a vertical slider with a white bar; and a minus sign in a circle.



# Operational Domains

A wide variety of international customers means that HIWIRE™ has evolved a plethora of built-in tools that ensure adaptability to a multitude of real-world operational requirements.

①

## Law Enforcement

- ➔ Domestic gang-related activity
- ➔ Paedophilia
- ➔ Identity theft & fraud
- ➔ Follow-the-money operations

②

## Engagement & Influence

- ➔ Identify key influencers and activists
- ➔ Monitor opposition networks in real-time
- ➔ Organically disseminate messaging
- ➔ Exert soft influence on public opinion

③

## Homeland Security (HLS)

- ➔ Home-grown terror networks
- ➔ Domestic radicalization networks
- ➔ Transportation security threats
- ➔ Sanctions & compliance issues

④

## Cybercrime & Hacktivism

- ➔ Focus technical defenses by sensing in real-time:
- ➔ Who specifically wants to attack you?
- ➔ What are their motives?
- ➔ How are they organized?
  - ➔ What tools are at their disposal?

⑤

## Defence

- ➔ Analyze adversary knowledge bases online (HME, IED, TTPs)
- ➔ Exploit enriched real time localized data for target specific ops
- ➔ Support irregular warfare efforts

⑥


## Business Intelligence

- ➔ Corroborate and extend due diligence
- ➔ Execute organic brand analysis
- ➔ Discover organizational leaks
- ➔ Pre-empt regulatory compliance issues

# ELECTRONIC SURVEILLANCE

Collect, monitor and analyse every kind of information source

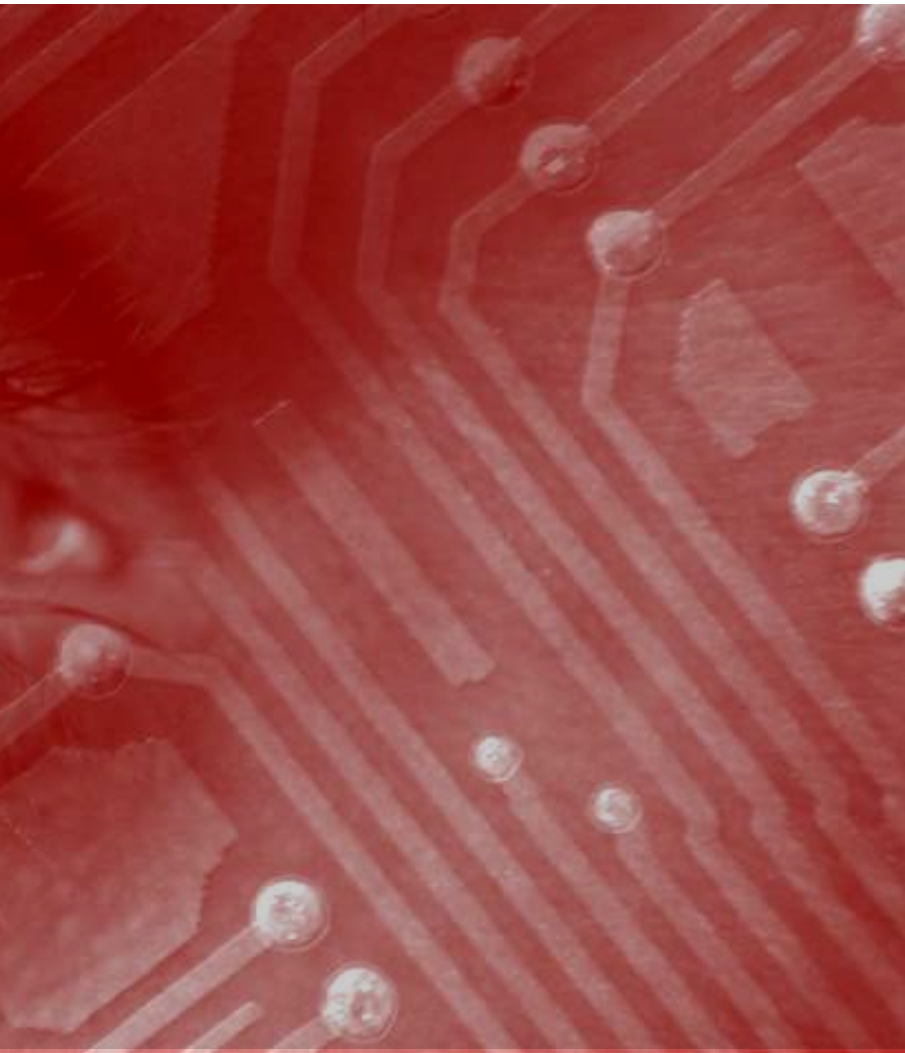




TRACKING, WATCHING AND LISTENING INTERCEPTED DATA FROM THOUSAND OF HIDDEN DEVICES DISTRIBUTED IN THE FIELD.

## Electronic **Surveillance**

To take right decisions you need accurate information. Our Electronic Surveillance applications are meant to provide support for investigations where the use of hidden microphones, cameras and GPS tracking devices is needed to gather information through surveillance of people and places.



## CORRELATING AND SYNCHRONISING DATA FROM HETEROGENEOUS SOURCES TO PROVIDE REAL TIME ALERTS

The Company solutions portfolio includes complete HW/SW systems for audio and video monitoring and GPS tracking. Both real time listening/viewing and offline analysis are supported. GIS tools are available to represent and analyse targets positions over maps.

Different types of microphones and cameras can be supported and integrated as well as tracking devices to implement modular

and scalable solutions according to project requirements and investigations needs: from tactical laptop size to strategic multiple servers size systems, to handle from small to large numbers of audio, video and GPS devices simultaneously.



- ➔ Audio
- ➔ Video
- ➔ Tracking
- ➔ Mobile Intelligence
- ➔ Training

## Tracking

Government agencies and police forces use GPS to get instant answers on suspects or criminals locations and movements. This solution is a complete system made by tracking devices to be installed in vehicles, and a set of mobile monitoring devices provided with the pre-installed dedicated software. The tracking device can be installed either inside or outside a vehicle. Its main characteristics are the very long operating time and the latest technology GPS receiver, allowing the device to have built-in antennas (GPS and GSM) and a very high accuracy finding position coordinates.

## Mobile Intelligence

The Mobile Intelligence solution allows tracking, watching and listening intercepted data with mobile standard Android devices in a secure way. Under covered operations to monitor targets on the field will be definitively improved by the capability to have real time access to information provided by interception devices and possibility to communicate and coordinate tasks and actions with all the team members and with decision makers at the control room.

# Solution Includes



## Listening

Our audio devices are all characterized by high quality audio and great internal memory to provide very long recording time without the need of remote connection. These capacities are also a benefit to overcome the use of electronic countermeasures equipment.

The devices can work in both mono and stereo mode, and audio compression engine provides faster download times. The audio equipment are easy adaptable to multiple use contexts and allow to operate very close to the environment that has to be monitored.

Depending on operations type, transmitters can be installed inside vehicles, buildings or body worn to provide the optimal mixture among miniaturization, operational range and operating time, covering both radio frequency and UMTS/GSM audio/data transmission systems.

Moreover, the availability of GPS equipped devices enriches such modules with location capabilities.



## Video

Electronic Surveillance Video solution allow the complete centralized control of a wide number of tactical audio/video equipment deployed geographically and connected through IP, 3G or dedicated P2P networks. The solution is highly modular and scalable in order to handle different kind of devices (i.e. Micro Audio/Video cameras with local recording capabilities (MDVR), COFDM Audio/Video Systems, Stand- Alone IP Cameras, etc.) as well as to be adapted to manage



## Training

Tailored professional training courses and workshops, continuous support and on-site consulting services



HELPING OUR CUSTOMERS TO PREPARE FOR THE UNEXPECTED  
[WWW.BRAMSTON.ASSOCIATES](http://WWW.BRAMSTON.ASSOCIATES)



# LAWFUL INTERCEPTION

Collect, monitor and analyse every kind of information source



COLLECT, MONITOR AND  
ANLYSE EVERY KIND OF  
INFORMATION SOURCE.



## lawful **interception**

In a digital world it is essential to identify and analyse communications to solve an investigation. Intelligence Departments and Law Enforcement Agencies need to rapidly analyse data coming from different sources.

We support these needs with a Monitoring Centre platform, which is able to retrieve information on request from available networks and systems. The platform includes recording capability for any type of audio, video and data content, real-time/off-line listening/



THE BEST WAY TO INTERPRET WHAT HAPPEN ,TO IMPROVE CRIME DETERRENCE AND TO SUPPORT COMMUNITY PROTECTION.

viewing features, and provide some analysis tools to gather intelligence from the information. It also encompasses back-office tools for editing data or exporting data on portable media.

Our solutions portfolio in this field includes both passive and active systems for interception of traditional telephony services as well as the more sophisticated Internet applications. Probes,

mediations and provisioning systems can be suitably customized to enable the Telecom Operators and the Content Service Providers to implement the interception as per specific national legal requirements.



- ➔ Voice Interception (Sms, Fax, Mms)
- ➔ Relation Analysis
- ➔ Statistics
- ➔ Voice Biometrics
- ➔ Positioning
- ➔ IP Rendering
- ➔ Case Management Approach
- ➔ Training

## Voice **Interception** (Sms, Fax, Mms)

Lawful Interception infrastructures for any type of Communication Service Provider including GSM, GPRS, UMTS, ADSL, VoIP, VoLTE, etc. Real time access to data, in order to archive and analyze the communications and identify the information to be used as evidence in the courts.

## Relation **Analysis**

The traditional link analysis is not adequate to explain how a relation network is composed and how it works. The intelligence analysts have to use an advanced tool to go beyond the traditional approach based on the link analysis methodologies. IPS solution discovers and explains relationships, identifies elements of interest and trends, generate pattern analysis.

Operating on a large volume of data, it provides a fast and helpful support to locate targets and making more rapid and effective the intelligence activities. It helps to increase analysts productivity providing on-going and constantly updated support to the operational team. It delivers high performance on Social Networks, Webmails and Call data. It allows to identify the targets and key players, hierarchies and relationship in target networks, discover unknown players and new communication channels and predict the target's activity.

# Solution Includes



## Statistics

Advanced reporting tools including link analysis, real time alerting, geo-location of results and statistical graphs.



## Voice Biometrics

In-depth analysis of language recognition, speaker and gender identification, keyword spotting inside long recordings.



## Positioning

Identification of the target's position with an high-level accuracy.



## IP Rendering

Interception and decoding of any kind of http protocol enhanced with useful metadata extraction.



## Case Management Approach

Platform architecture in logical layers that can be managed according to the investigation need



## Training

Tailored professional training courses and workshops, continuous support and on-site consulting services

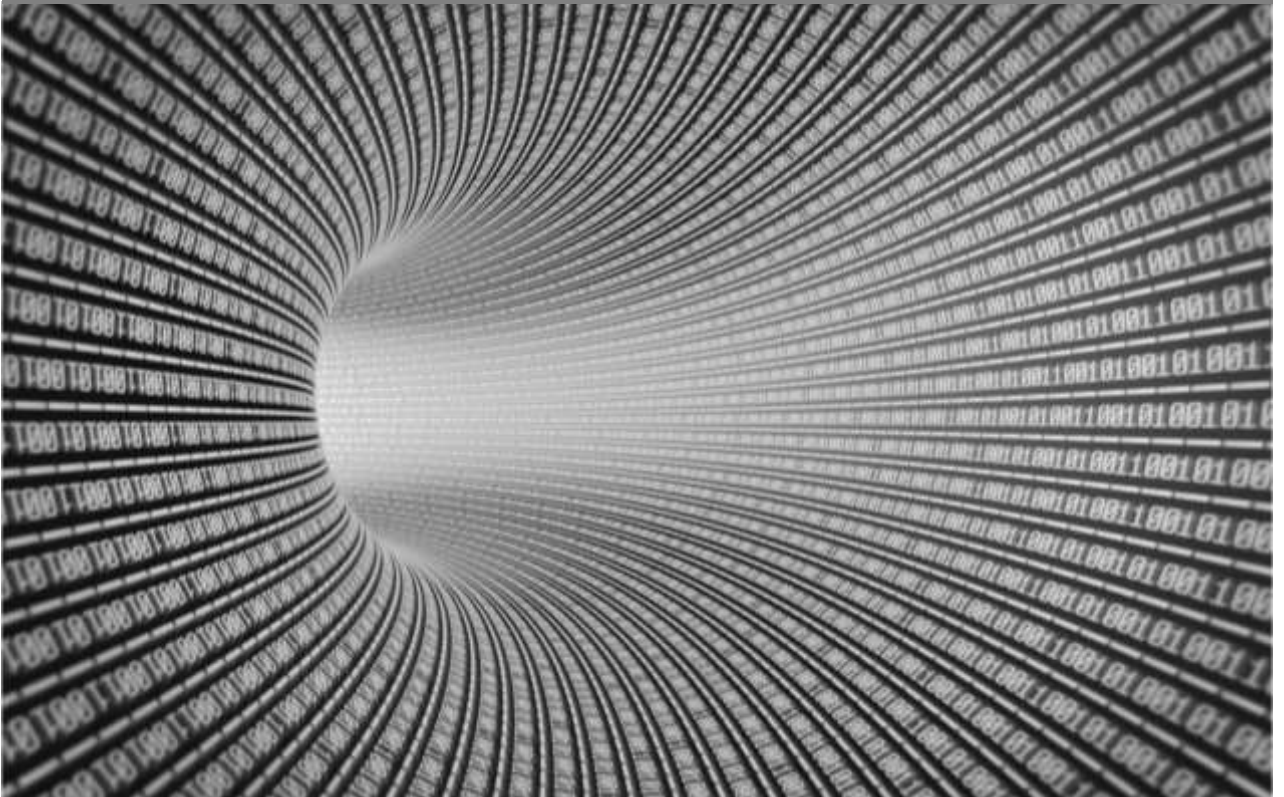


RISK MANAGEMENT-TECHNOLOGY SOLUTIONS - K-9

[WWW.BRAMSTON.ASSOCIATES](http://WWW.BRAMSTON.ASSOCIATES)

# UNCONVENTIONAL IP INTELLIGENCE

A new level of intelligence capability





COLLECT, MONITOR AND  
ANLYSE EVERY KIND OF  
INFORMATION SOURCE.

## Unconventional **IP Intelligence**

Preventing criminal activities, detecting terrorist attacks, identifying relevant threats in advance. Most of these challenges come from Internet and web 2.0 services.





THE BEST WAY TO INTERPRET WHAT HAPPEN ,TO IMPROVE CRIME DETERRENCE AND TO SUPPORT COMMUNITY PROTECTION.

A large set of new applications has increased the communication capabilities, providing a new way of interacting, sharing information and organising activities. Criminal organizations exploit these applications taking advantage of the anonymity granted by the Internet.

A unique solution to face this challenge doesn't exist. Our

solutions deliver a new level of intelligence capability, including Network Monitoring systems and OSINT to complement traditional Lawful Interception infrastructure. The combination of different methodology and technology will help to improve the visibility with the aim to identify, prevent and neutralize the threats that comes from Internet.



- Open Source Intelligence
- DPI Network Monitoring
- Metadata extraction and analysis
- Profiling
- Social network analysis and tracking
- Training

## Open Source Intelligence

Our end-to-end OSINT Platform provides a modular and future-proof solution to monitor Web and Social Media in order to identify, prevent and neutralize threats.

Key benefits: gathering public data from a wide range of sources; geo-location of results; multi-social correlation information on most used platforms; relations analysis and statistical graphs; advanced semantic analysis on specific entities on multi-language base; open platform to be integrated with third party analytics tools and databases; reporting tools for technical analysts as well as for high ranking decision makers; real time alerting; deep and dark web ready; Virtual Humint; compatible with main social networks, as Facebook, Twitter, Instagram, LinkedIn, YouTube, Google+, Foursquare and more.

## DPI Network Monitoring

The Solution is a system designed to acquire information from multiple service and network providers using passive, in-line or tactical probes. Monitoring and grabbing of Internet traffic over Packet Switched Networks is possible through Packet Switched Probe (PSP) representing a hardware-software solution for monitoring and capturing data traffic on the basis of fully customizable interception criteria.

Typical usage examples: Content Providers network nodes not equipped with native LI capabilities; LEAs needing to monitor traffic outside the CSP networks (i.e. private infrastructures, airports, hotels, etc.); Investigators requiring advanced targeting criteria on traffic payloads through DPI (usually not available from CSP network LI functionalities) as long as pre-filtering capabilities; National security regulations include traffic filtering policies

# Solution Includes



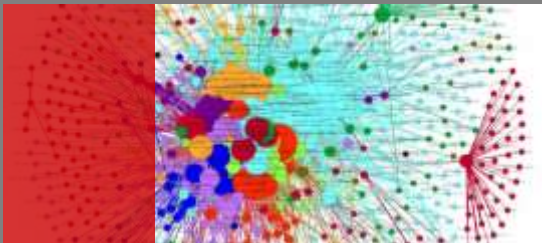
## Metadata extraction and analysis

New generation platform for Internet Data Retention based on metadata extraction and collection allowing Law Enforcement Agencies to drive their need of “Intelligence through Information” and consequent improve their investigation capabilities by massively collect, in a fully stealth and undetectable mode, relevant information daily crossing the national Internet



## Profiling

The lack of relevant information due to the encryption of the main communication tools transforms any bit of information available useful in order to build a profile of the target, understanding which kind of devices and behaviour is used to surf the web and what kind of applications are used to communicate.



## Social network analysis and tracking

The adoption of HTTPS-based protocols by the most important social network platforms is the latest challenge, since the traditional approach to intercept and monitor such traffic is absolutely blind. The solution has been designed specifically for Government Intelligence and Security Agencies, to provide direct access to the source of information, which is not available monitoring the traffic according to LI



## Training

Tailored professional training courses and workshops, continuous support and on-site consulting services

GET IN TOUCH



**MAURITIUS  
OFFICE  
CONTACT**

Reg Office	Bramston & Associates 44E, Cyprus Lane, Leclézio Street Curepipe 74319, Mauritius
Phones	+230 5477 9993   +230 5477 9994 +230 5477 9995   +230 5477 9996
Emergency Phone	+230 5858 5100
SMS & Fax	+230 5492 3808
E-mail	<a href="mailto:mu@bramston.co">mu@bramston.co</a>
web	<a href="http://www.bramston.associates">www.bramston.associates</a>

**Bramston & Associates**